

RESOLUTION NO. 25-016

**RILEY-PURGATORY-BLUFF CREEK WATERSHED DISTRICT
BOARD OF MANAGERS**

**AUTHORIZING ADMINISTRATOR TO ENTER INTO AGREEMENT WITH GITA
GHEI FOR CONCEPT DESIGN FOR ART INTEGRATION**

Manager _____ offered the following resolution and moved for its adoption, seconded by Manager _____:

WHEREAS on July 13, 2022, the Board of Managers adopted resolution 22-054 authorizing Barr Taks Order 39 to conduct preliminary engineering study for the Lotus Lake Water Quality Improvement Project; and

WHEREAS on February 7, 2024, the Board of Managers were presented with finding from the preliminary engineering study and directed staff to take a broader, more holistic approach to the project; and

WHEREAS on September 11, 2024 the Board of Managers adopted resolution 24-056 approving task order 39B authorizing Barr to perform additional community engagement including the incorporation of artistic elements into the Lotus Lake Water Quality Improvement Project; and

WHEREAS on October 10, 2024, and RFQ for artist collaboration was disseminated; and

WHEREAS seven portfolios of qualification were submitted; and

WHEREAS a review and evaluation of the submittals, based upon five criteria essential to the project found the submittal provided by Gita Ghei and Max Crosby (Ghei) submittal to have a significantly greater understanding of, and demonstration of the ability to meet the criteria.

NOW THEREFORE BE IT RESOLVED that the Board of Managers of the Riley-Purgatory-Bluff Creek Watershed District hereby authorizes the administrator, with advice from counsel, to enter into an agreement with Gita Ghei, with a subcontract to Max Crosby, for collaboration with the engineering design team and creation of conceptual art pieces for a cost not to exceed \$8,000.

The question was on the adoption of the above resolution and there were __ yays and __nay as follows:

	YAYS	NAYS	ABSTENTION
CRAFTON			
DUEVEL			
NELSON			
PEDERSEN			
ZIEGLER			

Upon vote, the president declared the resolution _____.

Dated: February 5, 2025.

* * * * *

I, Jill Crafton, Secretary of the Riley-Purgatory-Bluff Creek Watershed District Board of Managers, do hereby certify that I have compared the above resolution with the original thereof as the same appears of record and on file with the District and find the same to be a true and correct transcript thereof.

IN TESTIMONY WHEREOF, I have hereunto set my hand this ____ day of _____, 2025.

Tom Duevel, Secretary

MEMORANDUM

FROM: Terry Jeffery, District Administrator

TO: RPBCWD Board of Managers

DATE: 1/31/2025

RE: Artist selection for North Lotus Lake Stormwater Park

On September 11, 2024, the Board of Managers approved Resolution 24-056 approving Barr Task Order #36B expanding the scope of the North Lotus Lake Project to include additional community engagement and the incorporation of an artist into the design team. On October 18, 2024, a Request for Qualifications was put out and by the November 15, 2024, deadline, we had received proposals from seven artists or artist teams.

Upon initial review of the proposals, two were removed from consideration as their proposals did not include the basic elements of the request. The remaining five submittals were reviewed by the panel that solicited the RFQs and scored based upon five metrics.

1. How well their proposals demonstrated an understanding of the project purpose and objectives.
2. Their experience collaborating with units of government.
3. Did their narrative and portfolio demonstrate interactivity with the pieces.
4. The durability of the installation and the minimization of maintenance needs.
5. The incorporation of elements of ecology.

A maximum of 25 points were available. While all of the reviewed submittals demonstrated each of the five elements of concern to some degree, one artist team clearly separated themselves from the others. The team of Gita Ghei and Max Cora scored the maximum on all panelist review sheets. They demonstrated a complete understanding of the goals of the project – durable materials, art that promotes interaction with the public and tells a story about the project itself as well as the regional ecologic and social significance. Additionally, they have worked successfully with several government organizations in the past.

Based upon our review of the proposals submitted, the panel recommends that the Board of Managers enter into an agreement with Gita Ghei and Max Cora to work collaboratively with the Barr design team to develop a concept plan of how art will be incorporated into the overall project.

MARCY

	Understanding of objective	Experience collaborating with government units	Interactivity of art	Durability of installation	Incorporation of elements of ecology	Total Score
Remo Campopiano	4	3	3	4	4	18
Aaron Dysart	4	5	3	4	4	20
Gita Ghei	5	5	5	5	5	25
Gail Katz-James	4	3	3	4	4	18
Randy Walker	4	4	4	4	3	19

SCOTT

	Understanding of objective	Experience collaborating with government units	Interactivity of art	Durability of installation	Incorporation of elements of ecology	Total Score
Remo Campopiano	4	3	3	5	4	19
Aaron Dysart	3	5	3	4	3	18
Gita Ghei	5	5	5	5	5	25
Gail Katz-James	3	4	4	4	3	18
Randy Walker	3	4	4	5	3	19

TERRY

	Understanding of objective	Experience collaborating with government units	Interactivity of art	Durability of installation	Incorporation of elements of ecology	Total Score
Remo Campopiano	4	3	4	5	4	20
Aaron Dysart	4	4	3	3	4	18
Gita Ghei	5	5	5	5	5	25
Gail Katz-James	5	5	4	4	4	22
Randy Walker	5	5	4	4	4	22

Request for Qualifications – Artist Collaboration for N. Lotus Lake Park

Issue Date: October 18, 2024

Project Location: N. Lotus Lake Park, [Pleasantview Road, Chanhassen, MN](#)

Information session (Optional): Saturday, November 2, 1-3 pm, open house at N. Lotus Lake Park

Submissions Due via email to mbean@barr.com by 3:00 pm, Friday, November 15, 2024

- Interviews may be requested prior to artist selection
- Notification of Artist Selection(s): by December 6, 2024

Design timeline: December 2024 – March 2025

Artist fee: \$8,000 artist fee for the concept design phase of work. Additional design fees for subsequent phases to be negotiated at a later date.

Project Background

Riley-Purgatory Bluff Creek Watershed District (District) and the City of Chanhassen are working together to develop concept designs for stormwater improvements at N. Lotus Lake Park, on the north shore of Lotus Lake in Chanhassen.

The existing 20-acre park currently offers open turf space, a playground, ball field, tennis courts, picnic shelter, outdoor skating rink, sledding hill, trails, and off-street parking. Proposed park improvements include stormwater management, provide water quality improvement, improve habitat diversity, and provide for passive recreation opportunities. Concepts may also be expanded to include pedestrian access to Lotus Lake and improvements to its shoreline.

RPBCWD is seeking an artist (or artist team) to work hand-in-hand with landscape architects and engineers from Barr Engineering and District staff to develop concepts that integrate art into the park. The concepts should be interactive, engaging, and educating the public to enhance park user experience. Artistic concepts may explore themes such as, but not limited to, historic and cultural significance of the land and water, Lotus Lake, habitat, native plants, pollinators, soils, ecology, stormwater management, engineering, climate, resiliency.

Community engagement to gather public input will occur in parallel to this scope of work, which will also inform concept development of the park. Preliminary stormwater management concepts are attached for reference. These concepts may change based on the integration of art and engagement with residents.

After concept design (this phase of work), further park design and construction detailing is anticipated which may include fabrication and installation of public art. Selected artist(s) will have the opportunity to select the precise location of their installation(s) based on their artistic vision. This public art is envisioned to be permanently installed within the park, which may be individual installations including, but not limited to:

- Public art that reflects ecological function and/or engages with the history of the land
- Educational signage or a series of interpretive elements
- Visual interpretation of water movement through the park
- Physical modifications to the lake shoreline and interaction with Lotus Lake

Any installation should be designed with maintenance in mind, suggesting a long lifespan and minimal maintenance required.

Estimated Project Schedule

Concept Design Phase – December 2024 – March 2025

Future phases of work (*pending approvals of both RPBCWD Board of Directors and City Council*): Park Design Development (2025), Park Construction Documentation (2025-2026), Construction (2026+).

Selected artist may be commissioned to create a detailed project proposal specific to the site location, dimensions, and function. Artists will participate in the remainder of the site design and engineering processes to determine appropriate locations for installation and ensure adequate foundations, electricity, or other requirements are included in the project prior to construction.

Submission Requirements:

All questions and submissions shall be directed to Marcy Bean, Project Manager + Landscape Architect, Barr Engineering, mbean@barr.com.



Qualifications shall be submitted electronically in PDF format and shall include the following:

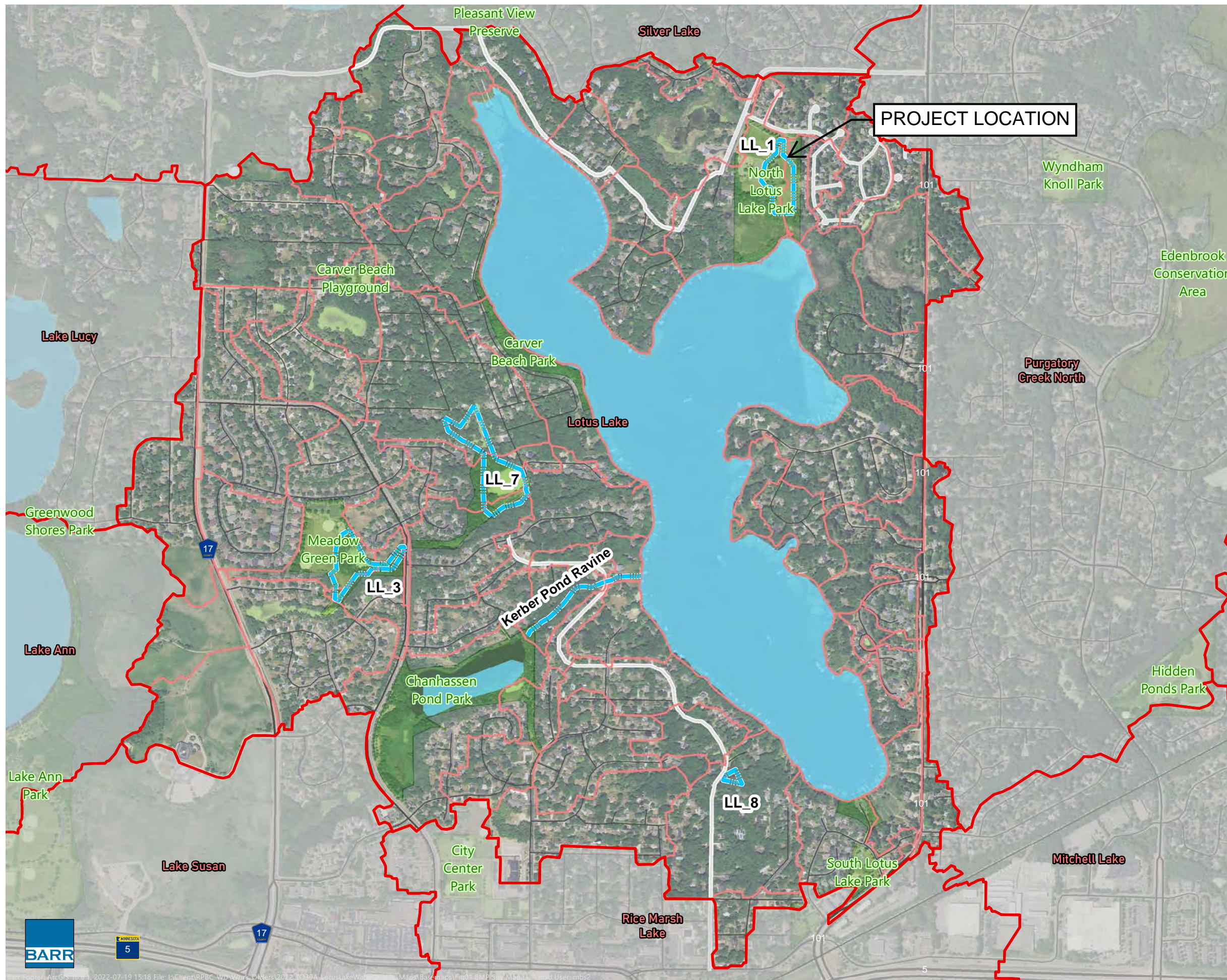
1. Letter of interest
 - a. Letter stating interest in the project, approach to design, and contact information (1 page)
2. Artist Information
 - a. Curriculum vitae (CV) or resume (2 pages max)
 - b. Artist biography(ies), including list of key project team members (1 page)
3. Work Samples
 - a. 5 to 10 work samples completed within the last 10 years. Include an image list with title, date, budget, client (if applicable), media, and dimensions. A link to an online portfolio is acceptable.
4. References
 - a. Three professional references who can speak to your ability to meet deadlines, work with a community, and create innovative work as part of a design team. Include name, title, organization, phone number, and email address.

<p>Final deadline for submissions is 3:00pm on Friday, November 15, 2024; all respondents will receive an email confirmation of receipt. Qualifications will be reviewed by an internal committee and selected artist(s) notified by 3:00pm on Friday, December 6, 2024.</p>

Lotus Lake Overview: Watersheds and BMP Locations

FIGURE 1-1

-  Lake/Pond
-  Park/Playground
-  Preserve/Recreation Area
-  Project Area
-  Major Subwatersheds
-  Lotus Lake Subwatersheds
-  City of Chanhassen Upcoming Road Reconstruction (2023 - 2027)



Preliminary Stormwater Management Concept A.



Proposed Concept LL_1a

Figure 4-2

- Contour
- Primary trail
- Secondary trail
- Water interaction experience
- Interpretive art feature
- Artful structures
- Stormwater filtration facility
- Savanna Prairie restoration
- Bee Lawn
- proposed Evergreen Tree
- Existing Tree
- Proposed BMP extents
- P8 Subwatershed
- Parcel Boundary
- NWI Wetland
- Lake/Pond
- Municipal Boundary
- 10ft contour (MN DNR, 2011)
- 2ft contour (MN DNR, 2011)
- Structure (Chanhasen)
- Storm Sewer (Chanhasen)



Preliminary Stormwater Management Concept B.



Proposed Concept LL_1b

Figure 4-3

- Contour
- ▬ Primary trail
- ▬ Secondary trail
- ▭ Water interaction experience
- ★ Interpretive art feature
- ◊ Artful structures
- ▭ Stormwater filtration facility
- ▭ Savanna Prairie restoration
- ▭ Bee Lawn
- proposed Evergreen Tree
- Existing Tree
- ▭ Proposed BMP extents
- ▭ P8 Subwatershed
- ▭ Parcel Boundary
- ▭ NWI Wetland
- ▭ Lake/Pond
- ▭ Municipal Boundary
- ~ 10ft contour (MN DNR, 2011)
- ~ 2ft contour (MN DNR, 2011)
- Structure (Chanhassen)
- ▬ Storm Sewer (Chanhassen)

